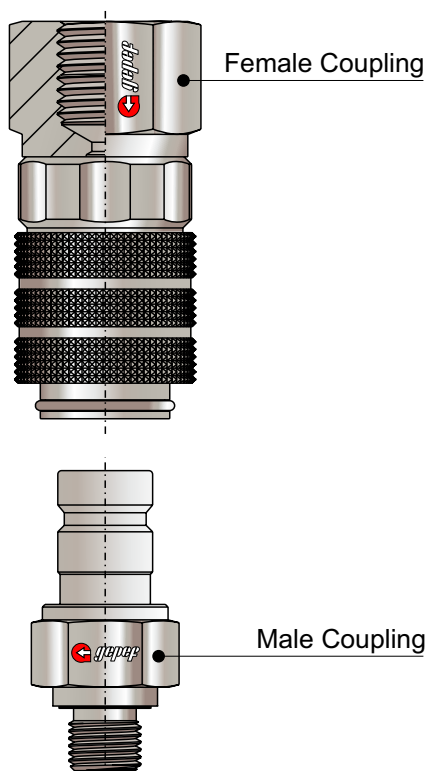


Diagnostic  
Quick Coupling

# DIAGNOSTIC AND MONITORING QUICK COUPLING – ERDM / ERDF

The Diagnostic Quick Coupling is used to verify operating pressure in hydraulic circuits. It features an internal valve system that blocks hydraulic flow during connection and disconnection, preventing oil loss.



## Connection

By pushing the male or female coupling.  
(Connection is not permitted when pressurized)

## Disconnection

Sleeve retraction  
(Disconnection is not permitted when pressurized)

## Rated Working Pressure

Up to 420 bar / 6,090 PSI

## Seals and Operating Temperature Ranges

NBR / Buna-N (-25°C up to 100°C) (-13°F up to +212°F) - (Standard)

(FKM) Viton (-15°C up to 200°C) (-5°F up to +392°F) - V

EPDM (-40°C up to 150°C) (-40°F up to +302°F) - E

## Interchangeability

ISO 15171-1

## Materials

Carbon steel with hardened components

## Surface Treatment

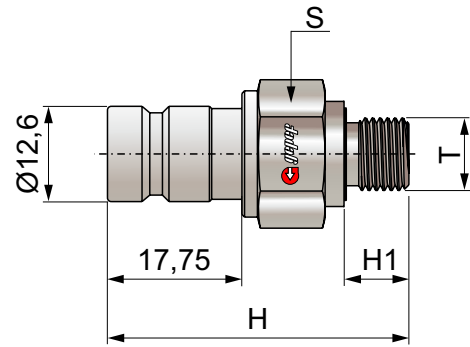
Trivalent zinc (Cr VI free)

Zinc – Nickel

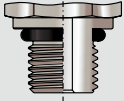
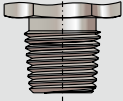
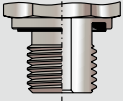
## Fluid

Hydraulic oils and other mineral-based fluids

Check chemical compatibility table for seals



Type – Thread T	H	H1	S	Working Pressure	Sealing Type
ERDM 1/8 NPT	41	10	17	420 bar / 6090 PSI	C
ERDM 1/4 NPT	41	15	17	420 bar / 6090 PSI	C
ERDM G1/8 BSP	41	8	17	420 bar / 6090 PSI	WD
ERDM G1/4 BSP	41	12	19	420 bar / 6090 PSI	WD
ERDM M12x1,5	41	10	17	420 bar / 6090 PSI	O
ERDM M14x1,5	41	12	19	420 bar / 6090 PSI	O
ERDM 7/16 UNF	41	9,5	17	420 bar / 6090 PSI	O
ERDM 9/16 UNF	41	10	19	420 bar / 6090 PSI	O

Type O	Type C	Type WD
ISO 6149-2 / -3 Metric Thread	DIN 3852-2 - BSPT Thread	ISO 1179-2 - BSP Thread
ISO 11926-2 / -3 UNF Thread	ANSI / ASME B1.20.1-1983 - NPT Thread	ISO 9974-2 - Metric Thread
		

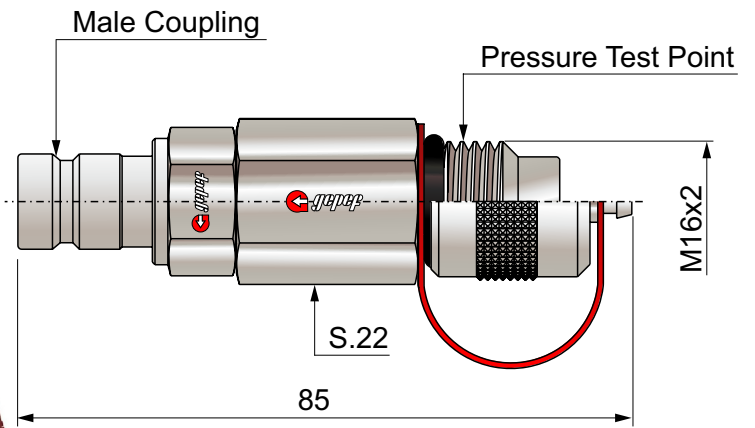
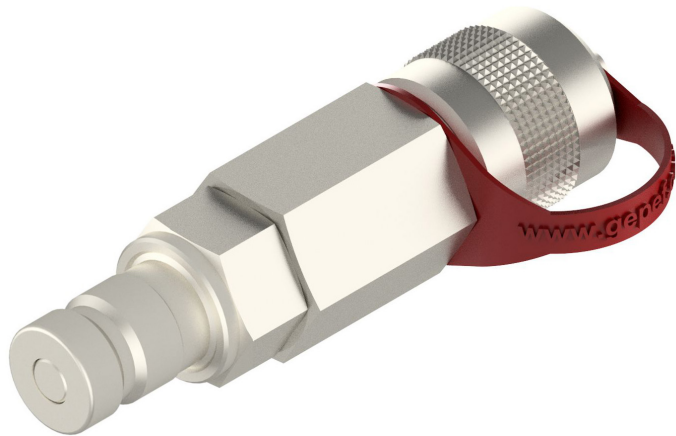
**Coding Example:**

**ERDM G1/8 BSP** (Diagnostic male coupling G1/8 BSP, WD sealing type).

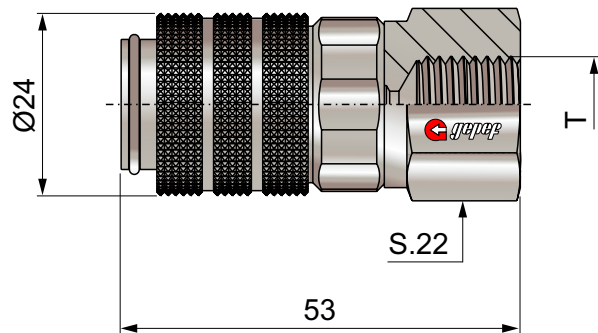
For AISI 316 stainless steel, add the letter I at the end of the code.

For Viton (FKM) or EPDM seals, add the letter V or E at the end of the code.

If another type of male diagnostic coupling not listed in this catalog is required, please contact our technical department.



Note: Pressure test point supplied without valve.



Type – Thread T

ERDF 1/8 NPT

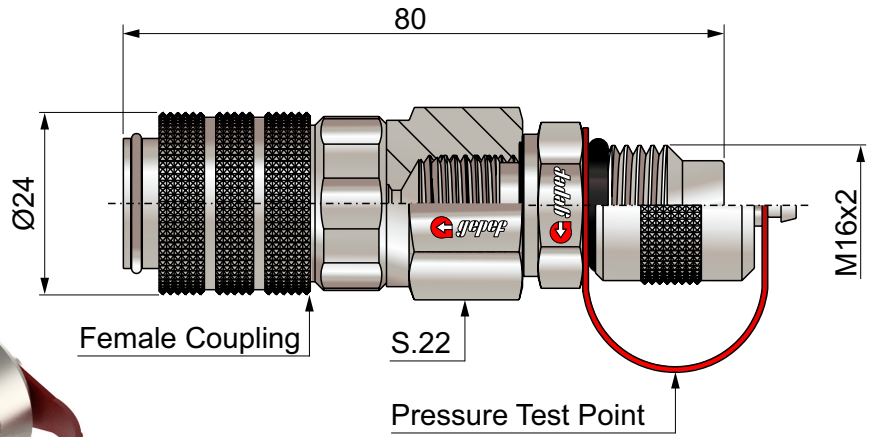
ERDF 1/4 NPT

ERDF G1/8 BSP

ERDF G1/4 BSP

Diagnostic Female Coupling ISO 15171-1 with Pressure Test Point

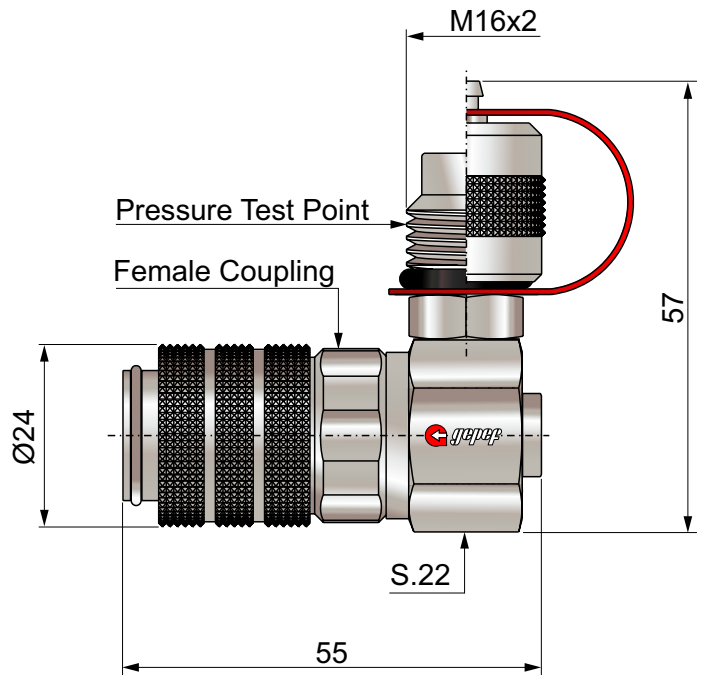
N-ERDF



Note: Pressure test point supplied without valve.

Diagnostic Female Coupling ISO 15171-1 – 90° with Pressure Test Point

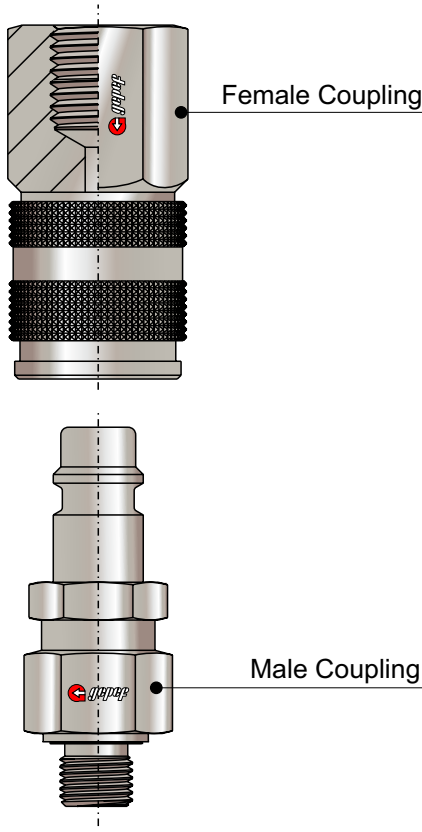
N-ERDF-90°



Note: Pressure test point supplied without valve.

# DIAGNOSTIC AND MONITORING QUICK COUPLING TPKMT / TPKMTF

The Diagnostic and Monitoring Quick Coupling for operating pressures up to 600 bar / 8,702 PSI can be connected under pressure up to 300 bar / 4,350 PSI on the male coupling. This system allows fast, leak-free monitoring of the circuit's operating pressure without the need for a permanently installed pressure gauge.



## Connection

By pushing the male or female coupling  
Permitted when pressurized up to 300 bar / 4,350 PSI

## Disconnection

Sleeve retraction

## Rated Working Pressure

Up to 600 bar / 8702 PSI

## Seals and Operating Temperature Ranges

NBR / Buna-N (-25°C up to 100°C) (-13°F up to +212°F) - (Standard)  
(FKM) Viton (-15°C up to 200°C) (-5°F up to +392°F) - **V**  
EPDM (-40°C up to 150°C) (-40°F up to +302°F) - **E**

## Materials

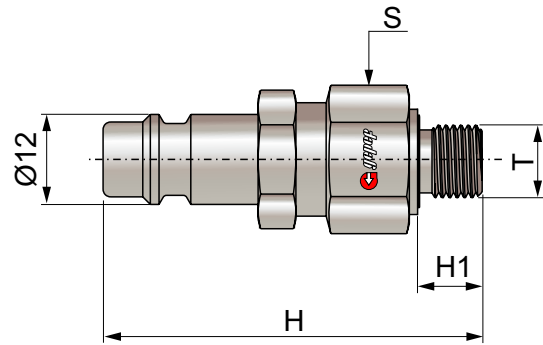
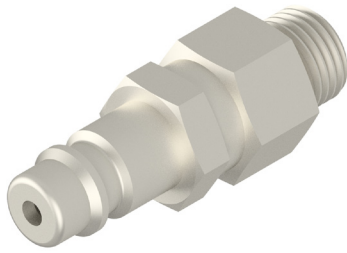
Carbon steel with hardened components

## Surface Treatment

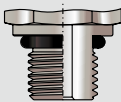
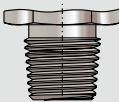
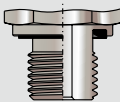
Trivalent zinc (Cr VI free)  
Zinc – Nickel

## Fluids

Hydraulic oils and other mineral-based fluids  
Check chemical compatibility table for seals



Type – Thread T	H	H1	S	Working Pressure	Sealing Type
TPKMT 1/2 UNF	50	9,5	17	600 bar / 8702 PSI	O
TPKMT 1/8 NPT	50	10	17	400 bar / 5801 PSI	C
TPKMT 1/4 NPT	54	15	17	600 bar / 8702 PSI	C
TPKMT G1/8 BSP	50	8	17	400 bar / 5801 PSI	WD
TPKMT G1/4 BSP	54	12	19	600 bar / 8702 PSI	WD

Type O	Type C	Type WD
ISO 6149-2 / -3 Metric Thread	DIN 3852-2 - BSPT Thread	ISO 1179-2 - BSP Thread
ISO 11926-2 / -3 UNF Thread	ANSI / ASME B1.20.1-1983 - NPT Thread	ISO 9974-2 - Metric Thread
		

**Coding Example:**

**TPKMT G1/8 BSP** (Male coupling G1/8 BSP, WD sealing type).

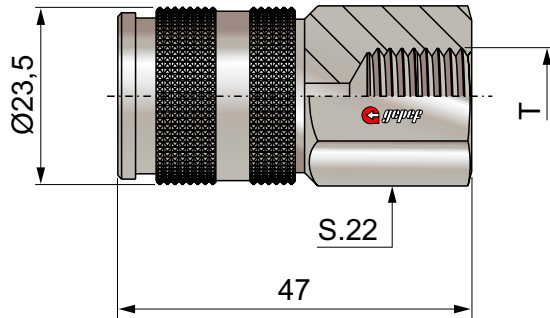
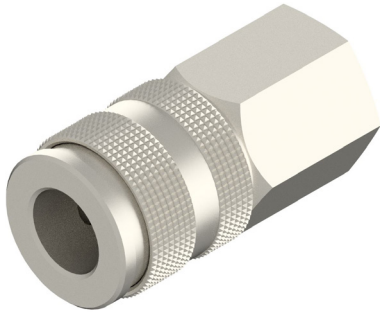
For AISI 316 stainless steel, add the letter I at the end of the code.

For Viton (FKM) or EPDM seals, add the letter V or E at the end of the code.

If another type of male diagnostic coupling not listed in this catalog is required, please contact our technical department.

## Female Coupling

## TPKMTF



### Type – Thread T

TPKMTF 1/2 UNF

TPKMTF G1/8 BSP

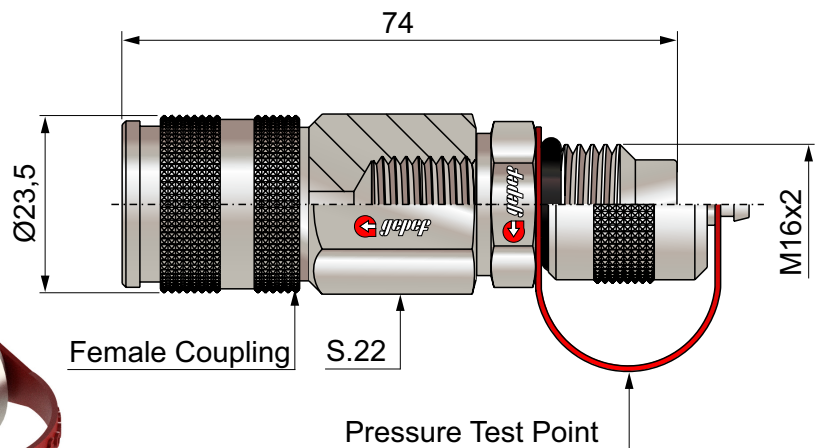
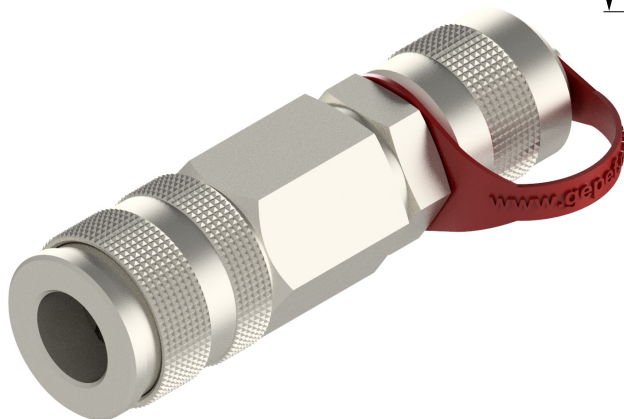
TPKMTF G 1/4 BSP

TPKMTF 1/8 NPT

TPKMTF 1/4 NPT

## Female Coupling with Pressure Test Point


## N-TPKMTF



**Note:** Pressure test point supplied without valve.




## Manufacturing Facility


 + 55 15 3264-1222

 [gepef@gepef.com.br](mailto:gepef@gepef.com.br)


 [www.gepef.com.br](http://www.gepef.com.br)


 Avenida do Trabalhador, 1.680  
ZIP Code 18552-100 - Boituva - SP  
Brazil

## Head Office & Operations Center


 Av. Antônio Ângelo Amadio 681  
ZIP Code 18552-112 - Boituva - SP  
Brazil

Branch Office – Belo Horizonte, MG – Brazil - Regional sales operations  
for Minas Gerais and Brazil's Central-West Region

 + 55 31 3327-4459

 [gepef-bh@gepef.com.br](mailto:gepef-bh@gepef.com.br)

 [www.gepef.com.br](http://www.gepef.com.br)

 Avenida Professor Mário Werneck, 300  
(10th Floor – Room 1004 – Tower 2) – Estoril District  
ZIP Code 30455-610 - Belo Horizonte - MG  
Brazil